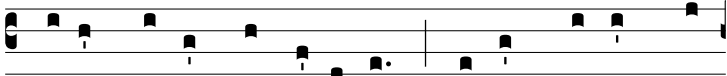


E



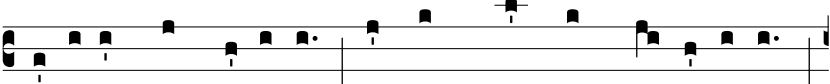
Cce Pá-nis Ange-ló-rum, Fáctus cí-bus vi-



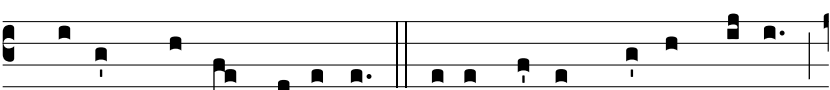
a-tó-rum Vé-re pá-nis fi-li-ó-rum, Non mittén-



dus cá-ni-bus. In fi-gú-ris præ-signá-tur, Cum



I-sa-ac immo-lá-tur, Agnus Páschæ de-pu-tá-tur,



Dá-tur má-nna pá-tri-bus. Bó-ne Pástor, pá-nis vé-re,



Jé-su, nó-stri mi-se-ré-re: Tu nos pásce, nos tu-é-re,



Tu nos bó-na fac vi-dé-re In térra vi-vénti-um.



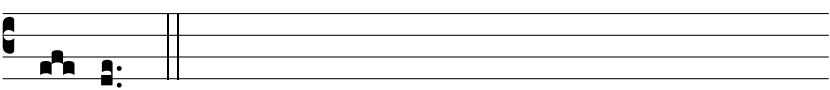
Tu qui cúncta scis et vá-les, Qui nos pá-



scis hic mortá-les: Tú-os i-bi commensá-les,



Cohærédes et sodá-les Fac sanctó-rum cí-vi-um.



A- men.