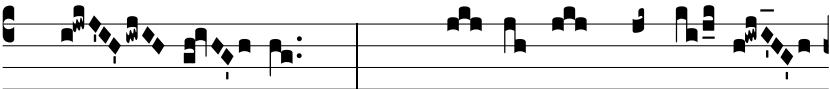


Resp.
8.

V



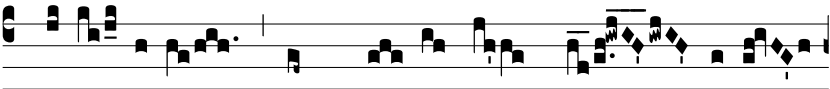
I-ne-a mé-a * e-lé-cta, é go te



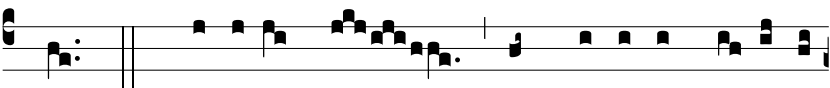
plan-tá-vi: * Quó-mo-do convér-sa



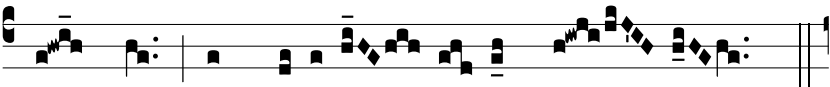
es in a-ma-ri-tú-di-nem, ut me cru-



ci-fi-ge-res, et Ba-rábbam di-mítte-



res? ∇. Se-pí-vi te, et lá-pi-des e-lé-gi



ex te, et ædi-fi-cá-vi túr-rim.



* Quó-mo-do. R̄. Ví-ne-a.