

Resp.

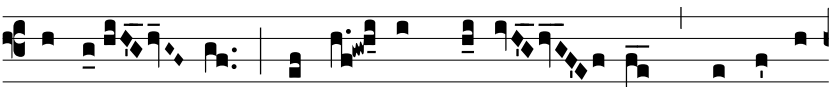
2.  
S



Epúl- to \* Dó- mino, signá- tum est monu-



mén- tum, volvén- tes lá- pi- dem ad ósti- um mo-



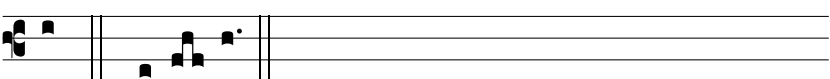
numén- ti: \* Po- nén- tes mí- li- tes, qui custo-



dí- rent íl- lum. V. Accedén- tes prínci- pes sa- cerdó-



tum ad Pi- lá- tum, pe- ti- é- runt íl- lum. \* Po- nén-



tes. R. Sepúl- to.