

Intr.
3.

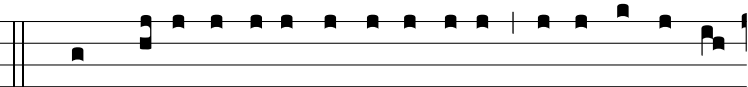


I

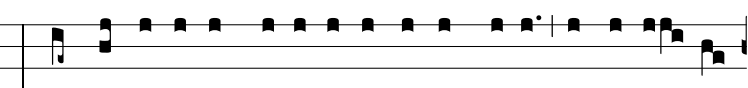
LLUXÉRUNT * co-ru- sca-ti- ó- nes tu- ae



orbi ter- rae : commó- ta est, et contré- mu- it ter-



ra. *Ps.* Quam di- lécta taberná- cu- la tu- a, Dómi- ne vir- tú-



tum! * concu- píscit et dé- fi- cit á- nima me- a in átri- a



Dómi- ni. Gló- ri- a Patri. E u o u a e.