

Intr.
8.

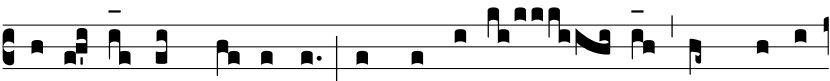
M



I-se- ré-re mi-hi * Dó-mi-ne, quóni- am ad te



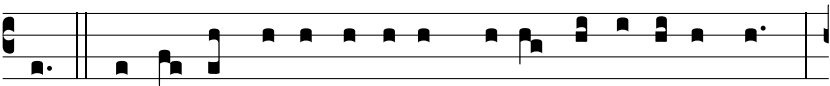
clamá- vi to-ta di- e : qui- a tu Dómi- ne



su-á- vis ac mi- tis es, et co- pi- ó- sus in mi- se-



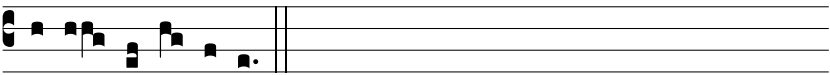
ri- cór- di- a ó- mni- bus invo- cánti- bus



te. Ps. Inclí- na Dómi- ne aurem tu- am et exáudi me : *



quó- ni- am inops et pau- per sum ego. Gló- ri- a Patri.



E u o u a e.