

Tract.
2.

P



Erse- quar

* in- imí- cos me- os,



et comprehén- dam

il- los.



¶. Confrín-

gam il-

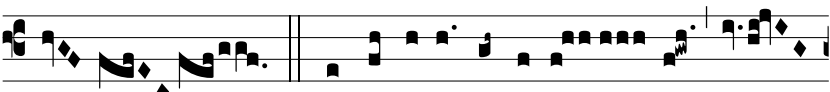
los, nec pót-



e- runt sta- re :

ca- dent

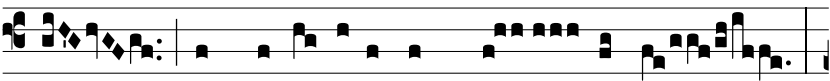
subtus pedes



me- os.

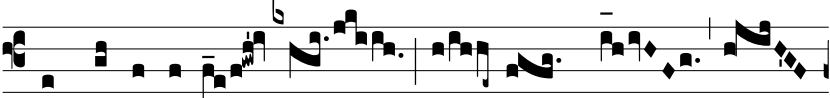
¶. Proptér-e-a confi-té-

bor ti-



bi in na-ti- óni-bus, Dó-

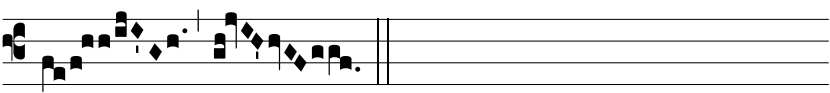
mi-ne,



et nómi-ni tu-

o

psal- mum * di-



cam.