

Grad.  
1.

T



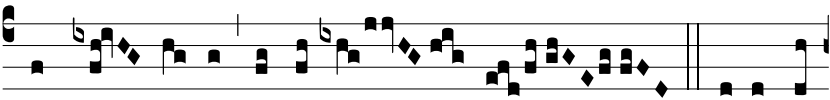
O- TA \* formó-sa et su-á-vis es, fí-li-a



Si- on, pul-cha ut lu- na,



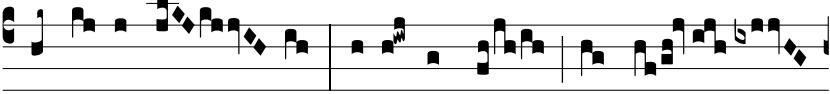
e- lé-cta ut sol, terrí-bi-lis ut castó-



rum á- ci- es ordi- ná- ta.  $\Psi$ . Bene- dí-



xit te Dóminus in



vir-tú-te su- a, qui- a per te ad ní-



hi- lum redé-



git \* i- ní- cos no- stros.