

Ant.
7.



L Ætá- re * alma ma-ter Ecclé- si- a : sancti Jo- seph



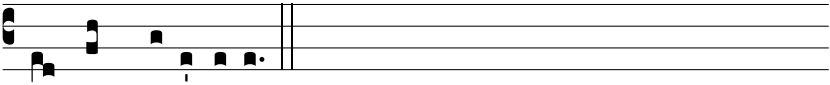
sponsi Ma- rí- ae adsunt sol- émni- a; tanti pro- tectó- ris lae-



tá- re mé- ri- tis, laetá- re patro- cí- ni- o; cu- jus glo- ri- ósae



pre- ces et pi- a suffrá- gi- a nos tu- e- ántur semper ac du-



cant ad caelésti- a.