

Intr.
1.



D

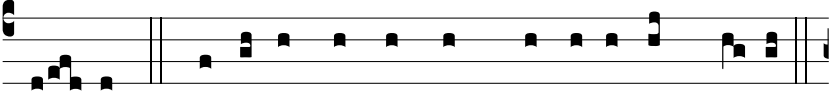
a pa-cem, Dó-mi-ne, sus-ti-nén-ti-bus te,



ut Prophé-tæ tu-i fi-dé-les in-ve-ni-ántur : exáu-di



pre-ces servi tu-i, et ple-bis tu-æ Is-



ra-ël. Ψ . Læ-tá-tus sum in his, quæ dicta sunt mi-hi :



in domum Dó-mi-ni í-bimus.