

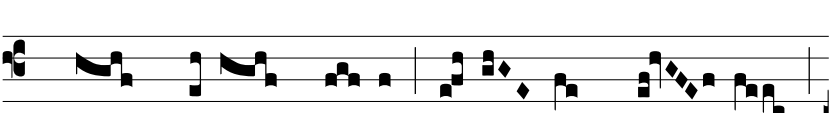
Intr. 2.  
S i-tí-vit á-ni-ma me-a ad De-um



for-tem vi-vum: quando vé-ni-am et ap-pa-ré-bo



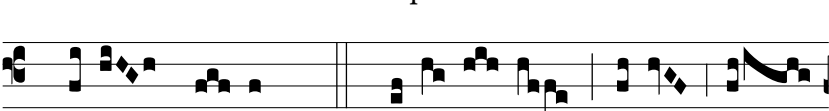
ante fá-ci-em De-i? Fu-é-runt mi-hi lácri-



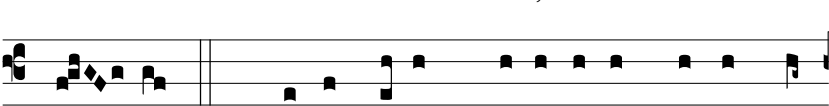
mæ me-æ pa-nes di-e ac no-cte,



dum dí-ci-tur mi-hi quo-tí-di-e: U-bi est



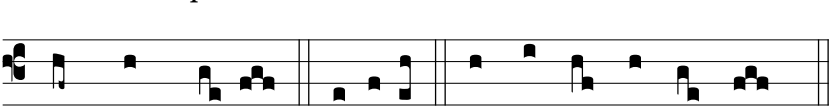
De-us tu-us? *T. P.* Alle-lú-ia, alle-



lú-ia.  $\nabla$ . Quemádmó-dum de-sí-de-rat cervus ad



fontes aquá-rum, i-ta de-sí-de-rat á-ni-ma me-a



ad te, De-us. Gló-ri-a E u o u a e.