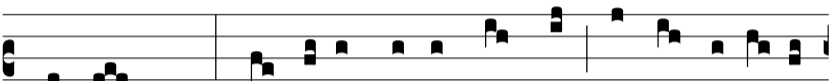


Ant.  
7.

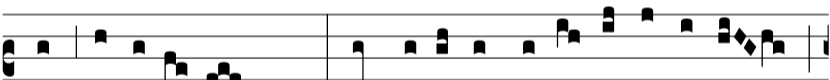
G



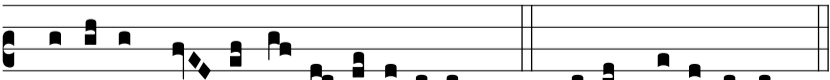
ábri- el Arch-ánge-le, qui ante De-um sem-



per as-sístis, ad-mítte pre-ces no-stras intra sacrá-ri-



um exaudi-ti- ónis, et repórta no-bis antí-do-tum



di-vínæ re- concí- li- a-ti- ónis. *T. P.* ónis, alle-lú-ia.