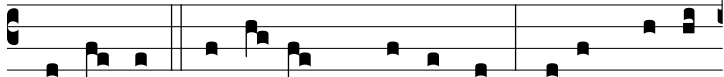


Ant.
8.

Z



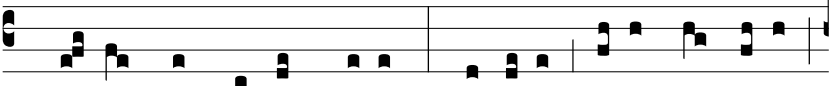
a-chæ-e fe-stí-nans descénde: qui- a hó-di-



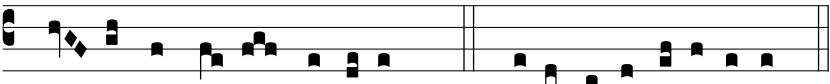
e in do-mo tu- a opórtet me mané- re.



At il-le fe-stí-nans descéndit, et suscé-pit il-lum



gau-dens in domum su-am. Hó-di- e hu- ic dó-mu- i



sa- lus a De- o facta est. *T. P.* Alle-lú-ia, alle-lú-ia.