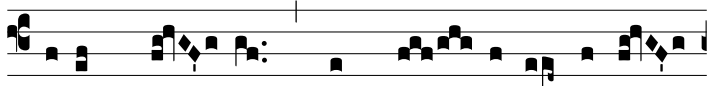


Comm.

2.

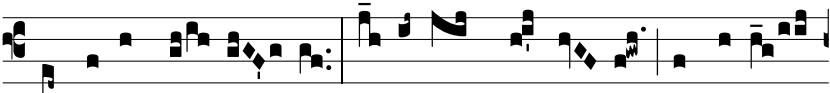
P



Otum me- um * cum fle- tu tempe-rá-



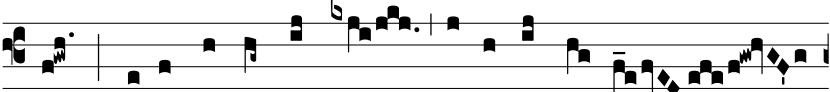
bam : qui- a é-le-vans al-li-sísti me : et e- go sic-



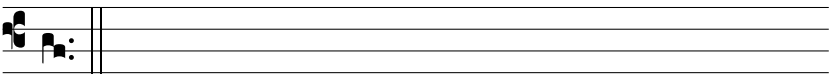
ut fenum á- ru- i : tu autem, Dó-mi- ne, in aetér-



num pérma- nes : tu exsúrgens mi-se-rébe- ris Si-



on, qui- a ve-nit tempus mi-se-réndi e-



jus.