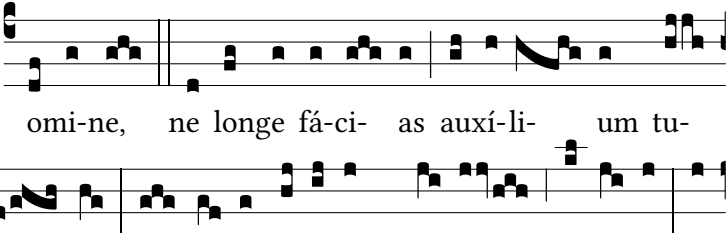


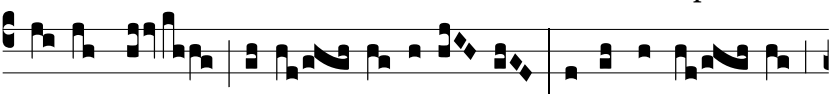
Intr.
8.



D omi-ne, ne longe fá-ci- as auxí-li- um tu-



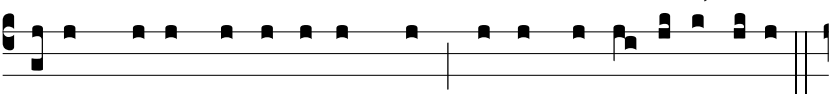
um a me: ad de-fensi-ónem me-am áspi-ce: lí-



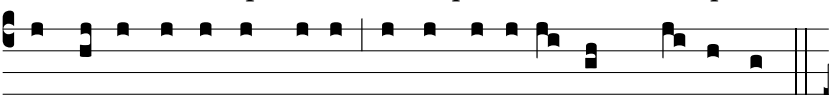
be-ra me de o- re le-ó- nis, et a córni- bus



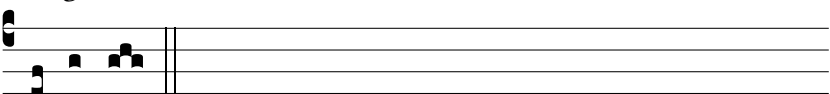
u- ni-córni- um humi-li-tá-tem me- am. Ψ . De-us



De-us me-us réspi-ce in me: qua-re me de-re-liquísti?



longe a sa-lú-te me-a verba de-lictó-rum me- ó-rum.



Dómi-ne.