

Comm.

8.

C



omé- di-te pín-gui- a, et bí- bi-te mul-



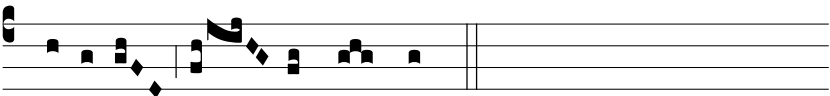
sum, et mít-ti-te partes e- is, qui non præpa-ra-



vé-runt si- bi: sanctus e-nim di- es Dómi-ni est,



no-lí-te contri-stá-ri: gáudi- um é-te-nim Dómi-ni est



forti-tú- do no- stra.