

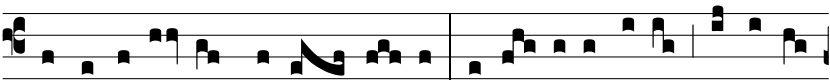
Comm.

1.

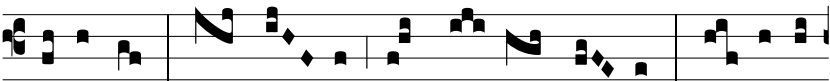
P



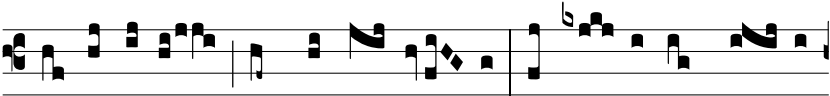
asser invé-nit si-bi domum, et turtur ni-dum,



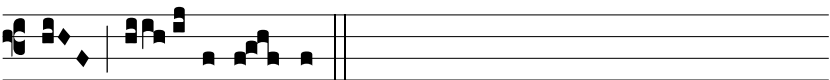
u-bi repó-nat pullos su- os: altá- ri- a tu- a, Dómi- ne,



virtú- tum, rex me- us, et De- us me- us: be- á- ti,



qui há-bi- tant in domo tu- a in sáe- cu- lum sáe- cu-



li lau- dábunt te.