

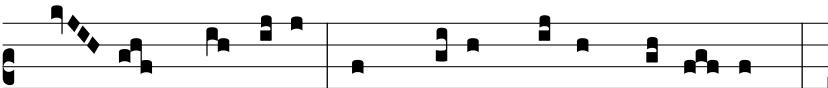
Resp.

6.

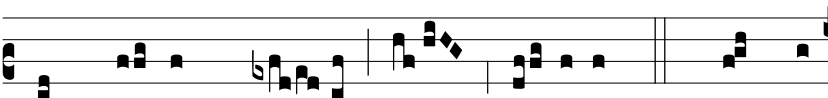
S



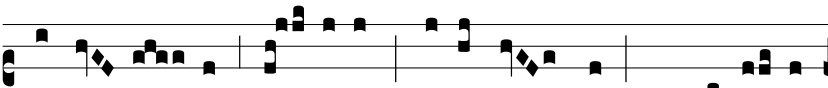
pre- tis hono- rum tí-tu-lis, mitras re-



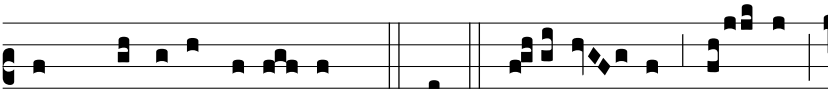
cú- sat hú-mi-lis: ex aula re-gis é-xi- it, *



Et va-stum ma-re trán- si- it. √. Cumque



exten-dís- set pál- li- um super a- quas, ambu-lá- vit



in mé-di- o e- á- rum. * Et. Gló- ri- a Pa- tri,



et Fí- li- o, et Spi- rí- tu- i Sancto. * Et va- stum.