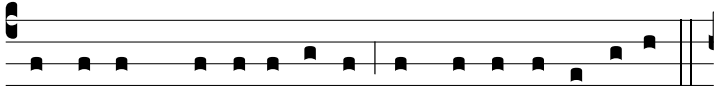


R. br.  
6.



**M**

agna est gló-ri-a e-jus in sa-lu-tá-ri tu-o, \*



Al-le-lú-ia, alle-lú-ia.  $\Psi$ . Gló-ri-am et magnum de-có-rem



impónes super e-um. \* Al-le-lú-ia... Gló-ri-a. Magna.