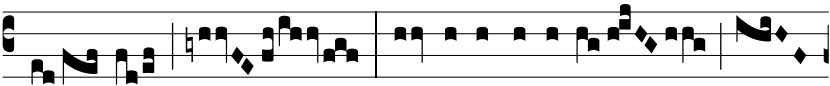


Resp.
2.

D



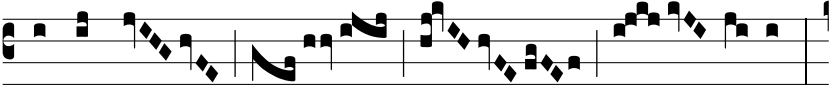
ó-mi-ne, re-fú- gi- um fa- ctus es



no- bis: a gene-ra-ti-ó-



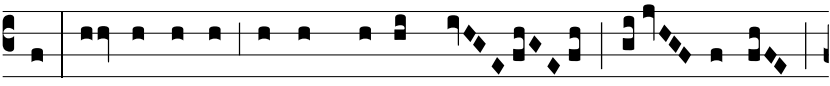
ne et pro-gé-ni- e. Ψ . Pri- úsquam



montes fí- e- rent,



aut forma-ré-tur terra, et or-



bis: a sáecu-lo et usque in sáe- cu-lum



tu es De- us.