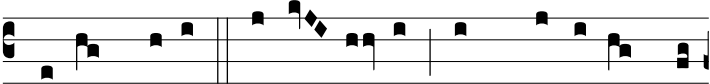


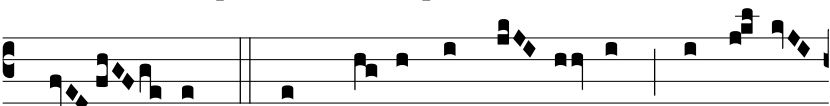
Q



uasi stella ma-tu-tí-na in mé-di-o né-



bu-læ, et qua-si lu-na ple-na in di-é-bus



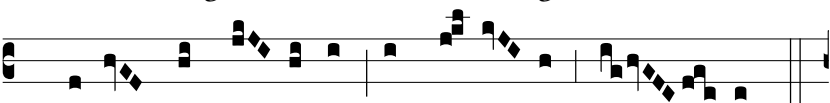
su-is. ∇. Et qua-si sol re-fúl-gens, sic il-le



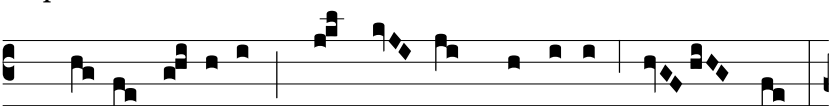
re-fúlsit in templo De-i. ∇. Qua-si ar-



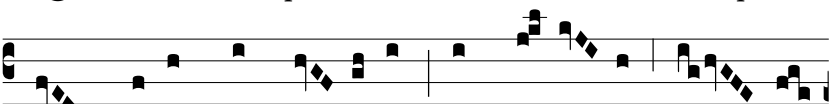
cus re-fúl-gens in-ter né-bu-las gló-ri-æ, et



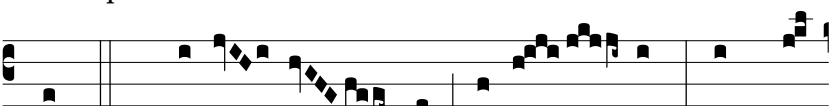
qua-si flos ro-sá-rum in di-é-bus ver-nis. ∇.



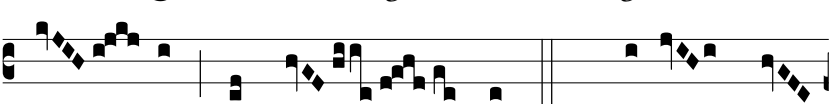
Qua-si lí-li-a quæ sunt in tránsi-tu a-quæ,



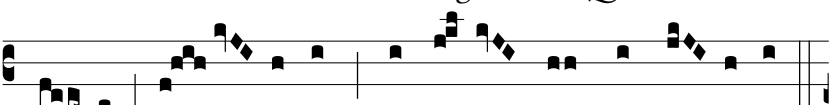
et qua-si thus ré-do-lens in di-é-bus æ-stá-



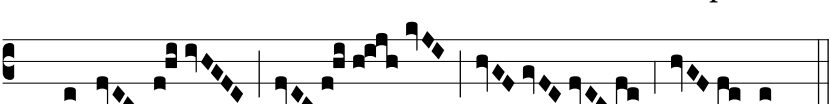
tis. ∇. Qua-si i-gnis effúl-gens, et thus



ar-dens in i-gne. ∇. Qua-si vas



au-ri só-li-dum, orná-tum o-mni lá-pi-de



pre-ti-ó-

so.