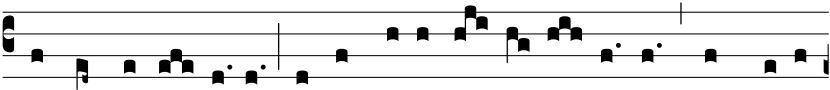


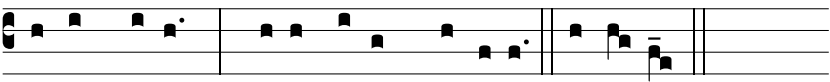
Ant.  
5.

D

Omi-ne, \* tu mi-hi la-vas pe-des? Respóndit Je-



sus, et di-xit e- i : Si non láve-ro ti-bi pe-des, non habé-

bis partem me-cum. *Ps.* Ve-nit ergo ad Simónem Petrum, \*et di-xit e- i Petrus. Dómi-ne. *Ps.* Quod ego fá-ci- o, tu

nescis modo : \* sci- es autem póste-a. Dómi-ne.