

ψ.



D

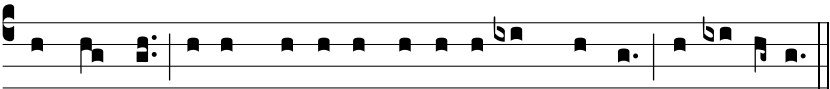
E-us in adju-tó-ri-um me- um inténde. R̄. Dómi-



ne ad adjuvándum me fe-stí-na. Gló-ri- a Patri, et Fí-li- o,

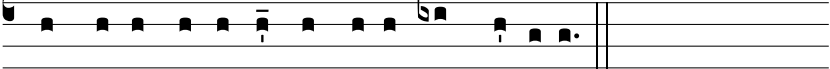


et Spi- rí- tu- i Sancto. Sic-ut e-rat in princí-pi- o, et nunc,



et semper, et in saécu-la saecu-ló-rum. Amen. Al-le-lú-ia.

*A Septuagesima usque ad Pascha, loco Alleluia, dicitur :*



Laus ti-bi Dómi-ne Rex aetérnae gló-ri-ae.