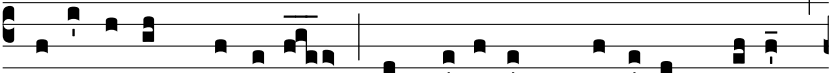


Ant.  
8 G.

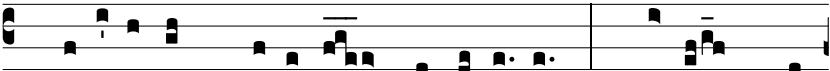
A



B O-ri- énte \* vené-runt Ma-gi in Bétlehem



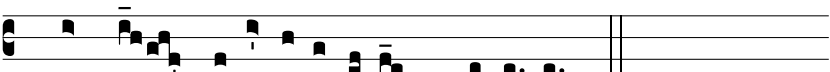
ado-rá-re Dóminum: et apértis thesáuris su- is,



pre-ti- ó-sa múne-ra obtu-lé-runt: aurum, si-



cut Re-gi ma-gno: thus, si-cut De-o ve-ro:



myrrham, sepultúrae e-jus, alle-lú-ia.