

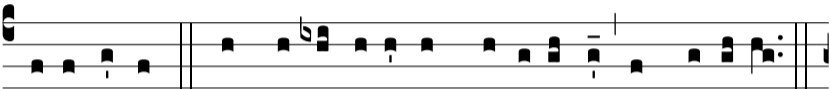
R. br.

6.

B



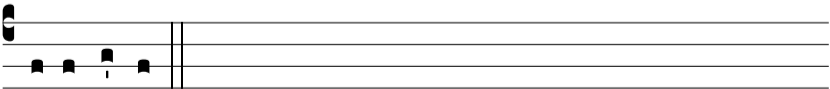
Ene-díctus es, Dómi-ne, * In firmaménto cæ-li.



Bene-díctus. Ψ . Et laudá-bi-lis et glo-ri-ó-sus in sáecu-la.



* In Ψ . Gló-ri-a Patri, et Fí-li-o, et Spi-rí-tu-i Sancto.



Bene-díctus.