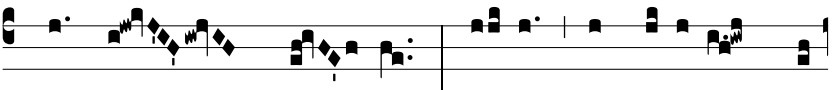


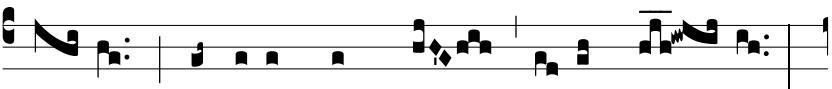
Resp.
8.



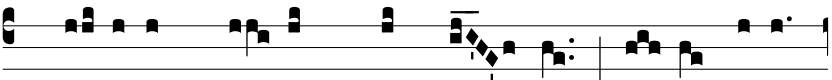
N mon- te * O-li-vé- ti o-rá-



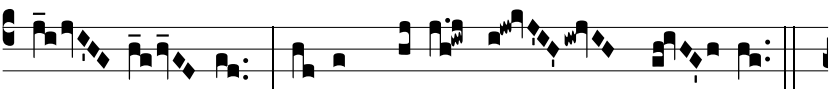
vit ad Pa- trem: Pa- ter, si fí- e-ri pot-



est, tránse-at a me ca-lix i- ste. *



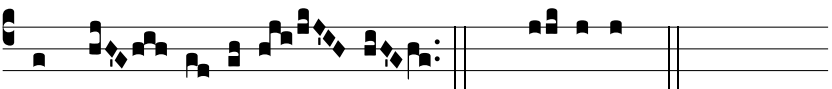
Spí- ri-tus qui- dem promptus est, ca- ro autem



in- fír- ma: fi- at vo-lún- tas tu- a. ∇



Vi-gi- lá-te, et o-rá- te, ut non intré-tis



in ten- ta-ti- ó- nem. * Spí- ri-tus.