

Resp.

1.

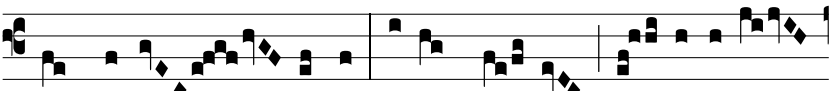
C



hri- sti pi- a tra- ctus dulcé- di-ne, mundum



lin- quens, probá- tur túr-bi-ne, \* Pug-il for- tis rap-



tus de Ór- di-ne, vi-cit pror-sus pul- sa li-bí-



di-ne.  $\Psi$  O- rat pres- sa Cru-ce mi-rí- fi-



ca: renes cingit ma-nus angé- li-ca. \* Pu-gil.