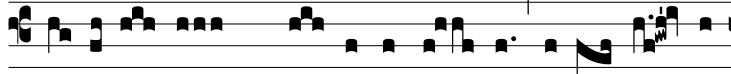
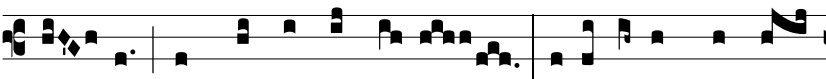


Intr.
2.

N



Arravé- runt * mi- hi in-í- qui fabu- la- ti-



ó- nes, sed non ut lex tu- a : ego autem loqué-



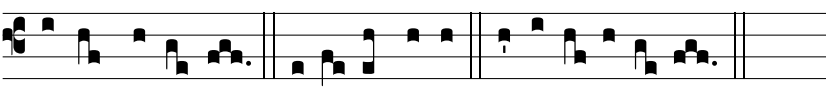
bar de testimóni- is tu- is in conspé-ctu re- gum, et



non confun-dé- bar. Al-le-lú- ia, alle- lú- ia.



Ps. Be- á- ti imma- cu- lá- ti in vi- a : * qui ámbu- lant in



le-ge Dómi- ni. Gló- ri- a Patri. E u o u a e.