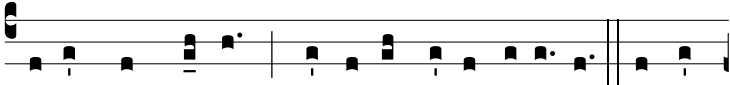
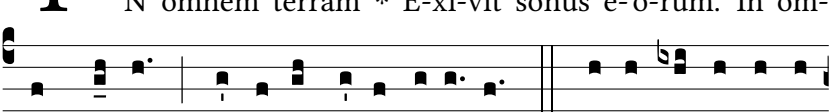


R. br.

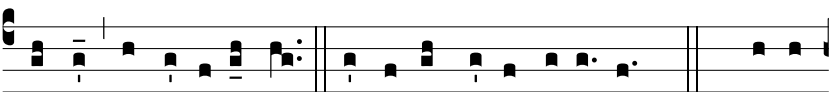
6.  
**I**



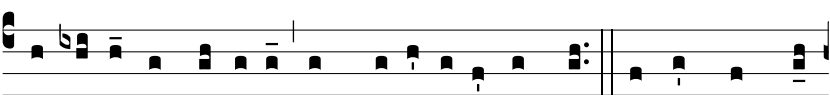
N ómnem térram \* E-xí-vit sónus e-ó-rum. In óm-



nem térram \* E-xí-vit sónus e-ó-rum.  $\Psi$ . Et in fí-nes órbis



térræ vérba e-ó-rum. E-xí-vit sónus e-ó-rum.  $\Psi$  Gló-ri-



a Pátri, et Fí-li-o, et Spi-rí-tu-i Sáncto. In ómnem tér-



ram \* E-xí-vit sónus e-ó-rum.