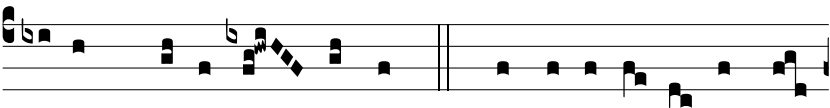


R. br.



**T**

U-a est magni-fi-cénti-a et po-ténti-a, \*



Tu-um, Dómi-ne, regnum.  $\Psi$ . Tu domi-ná-ris ómni-



um.  $\Psi$ . Gló-ri-a Patri, et Fí-li-o, et Spi-rí-tu-i Sancto.