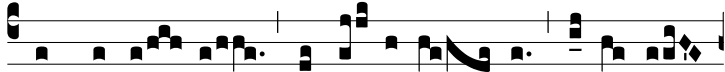


Tract.
8.



D

E pro-fún- dis * clamá- vi ad te, Dómi- ne:



Dómi- ne, exáu- di vo- cem



me- am. Ψ . Fi- ant aures tu-



ae in- tendén- tes



in o- ra- ti- ó- nem ser- vi tu-



i. Ψ . Si i- niqui- tá- tes ob- servá- ve-



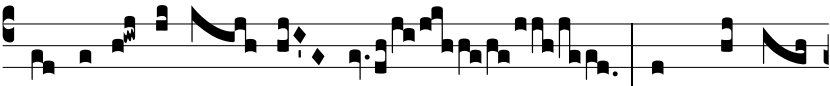
ris, Dó- mi- ne:

Dómi- ne, quis



sus- ti- né-

bit? Ψ . Qui- a apud te



pro- pi- ti- á- ti- o est,

et propter



le- gem tu- am sus- tí- nu- i te, * Dó-



mi- ne.