

Ant.
8 g.

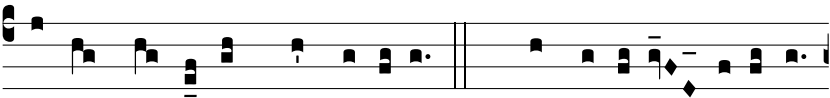


M

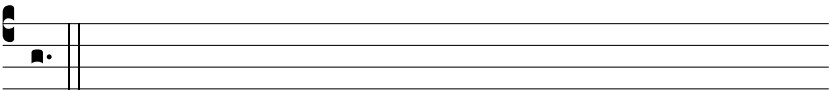
Artyr et Pónti-fex * Boni-fá-ti-us, Ro-mánæ Se-



dis legá-tus, Germános evangé-li-ca lu-ce per-fú-dit, et Fran-



có-rum succúrrit † Ecclé-si-is. *T. P.* † Ecclé-si-is, alle-lú-



ia.