

Resp.

7.

E

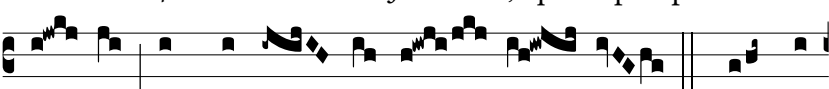
Cce pu- er me- us, quem e- lé-



gi, di-cit Dó- mi- nus, e- léc- tus me- us : *



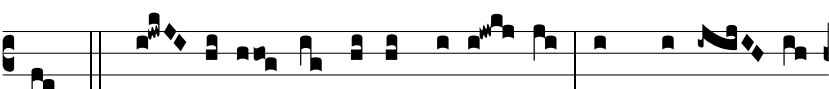
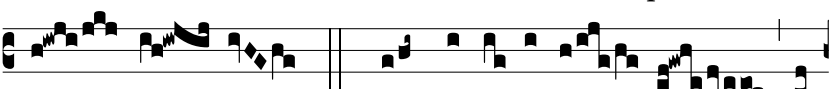
Complá-cu- i si- bi in il- lo á-nimæ

me- æ. *ψ*. Is- te est Jo- ánnes, qui supra pectus Dó-

mi- ni in cœna re- cú- bu- it. * Complá-



cu- i si- bi in il- lo á-nimæ me-

æ. *ψ*. Gló- ri- a Pa- tri, et Fí- li- o, et Spi- rí- tu-

i Sanc- to. * Complá-cu- i si- bi in



il- lo á-nimæ me- æ.