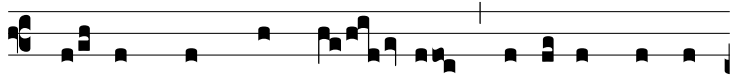


Resp.
2.

S



Ex-to namque di- e, portá-ri se in



o-ra-tó- ri- o a discípu- lis fe- cit; i- bí- que



éx-i- tum suum domí- ni- cis sacramén- tis mu-



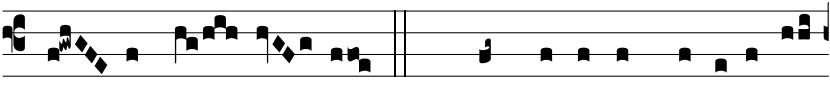
ní- vit, * Atque inter discípu- ló- rum ma- nus



exspi- rá- vit. ∇. E- réc- tis in cæ- lum má- ni- bus



ste- tit, et últimum spí- ri- tum inter verba o- ra- ti-



ó- nis ef- flá- vit. * Atque inter discípu- ló-



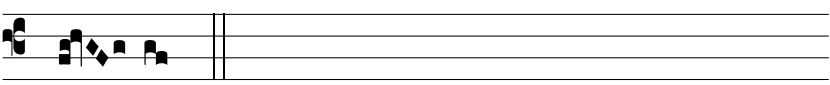
rum ma- nus exspi- rá- vit. ∇. Gló- ri- a Pa- tri,



et Fí- li- o, et Spi- ri- tu- i San- cto.



* Atque inter discípu- ló- rum ma- nus exspi-



rá- vit.