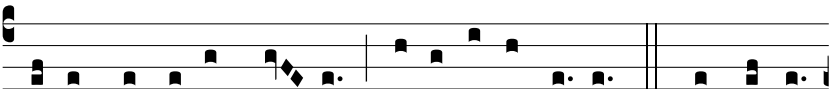


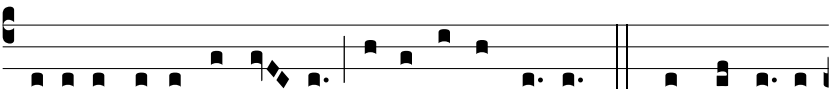
4.



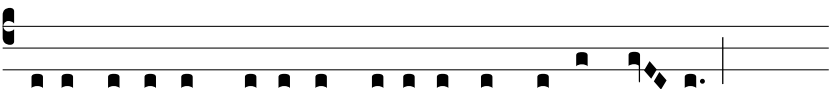
K

y-ri- e e-lé- i-son. *ij* Christe e-lé- i-son. *ij* Ký-ri- ee-lé- i-son. *ij* Christe audi nos. *ij* Christe exáudi nos. *ij*

Pa-ter de cæ-lis De- us, mi-se-ré-re no-bis. 1. Cor Je-su,



Fí-li- i Patris æ-tér- ni, mi-se-ré-re no-bis. 2. Cor Je-su, in



sinu Vírgi-nis Matris a Spí-ri-tu Sancto formá- tum,