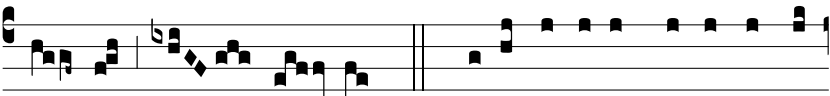




Loqué- tur Dómi- nus pa- cem in plebem su- am,



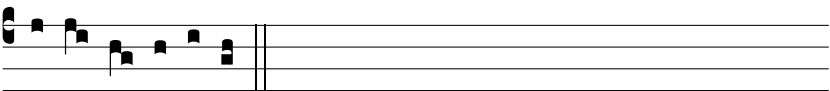
et super san-ctos su- os: et in e- os qui conver-



tún-tur ad i- psum. Ψ . Bene-di-xísti, Dómi-ne, ter-



ram tu- am: avertísti capti-vi- tá-tem Ja-cob. Gló-ri- a



E u o u a e.