

Resp.
7.

M



issus est Gábri-el An-ge-lus



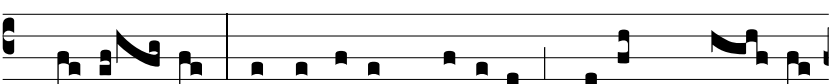
ad Ma-rí-am Vírgi-nem desponsá-tam



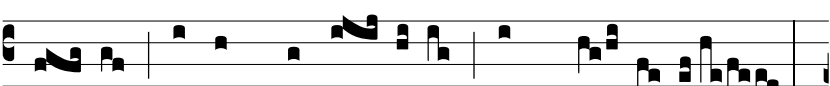
Jo-seph, núnti-ans e-i verbum: et ex-



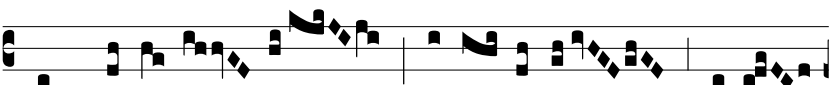
pavéscit Virgo de lú-mi-ne. Ne tí-me-as



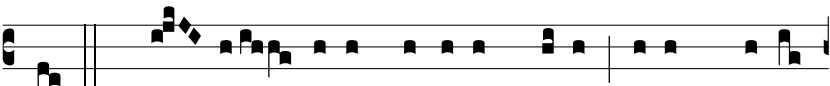
Ma-rí-a, inve-nísti grá-ti-am apud Dó-mi-



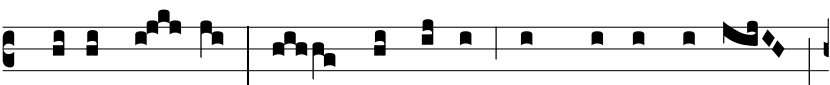
num: ecce concí-pi-es, et pá-ri-es, *



Et vo-cá-bi-tur Altí-simi Fí-li-



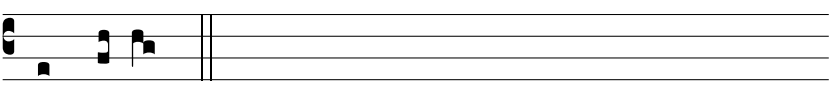
us. √. Da-bit e-i Dóminus De-us sedem Da-vid



patris e-jus, et regná-bit in domo Ja-cob



in æ-tér-num. * Et vo-cáb. Gló-ri-a. *



Et vo-cáb.